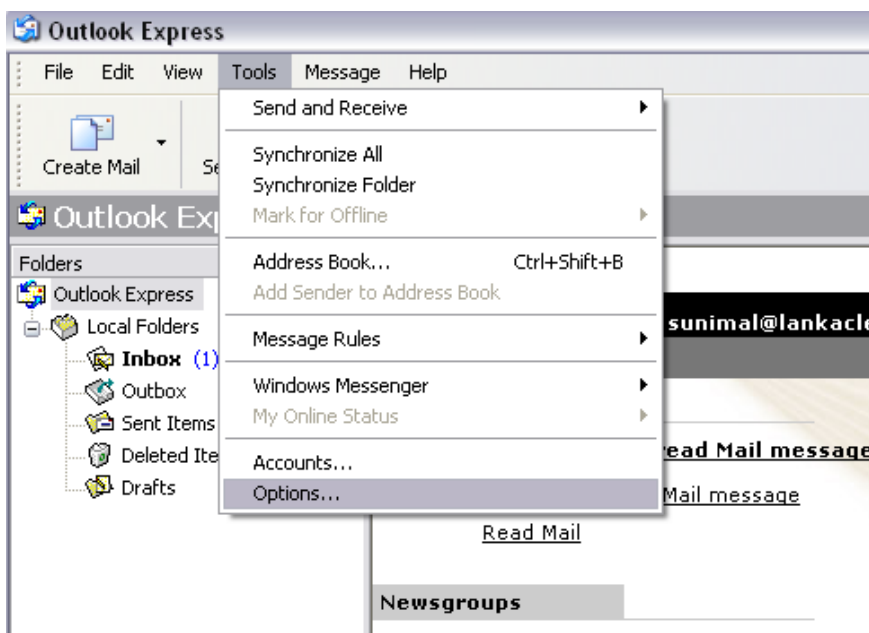
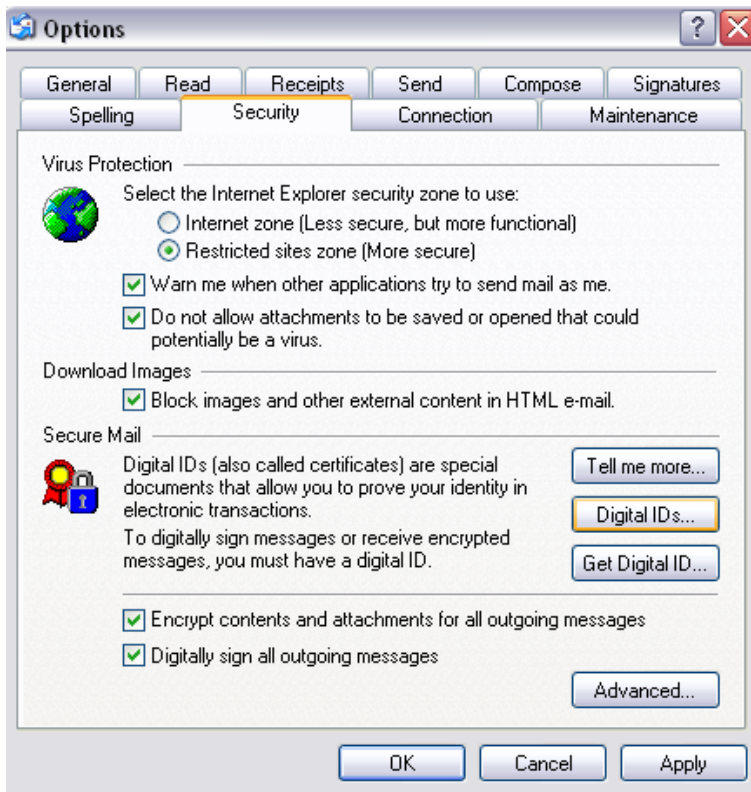


Importing Digital Certificate in to Outlook Express

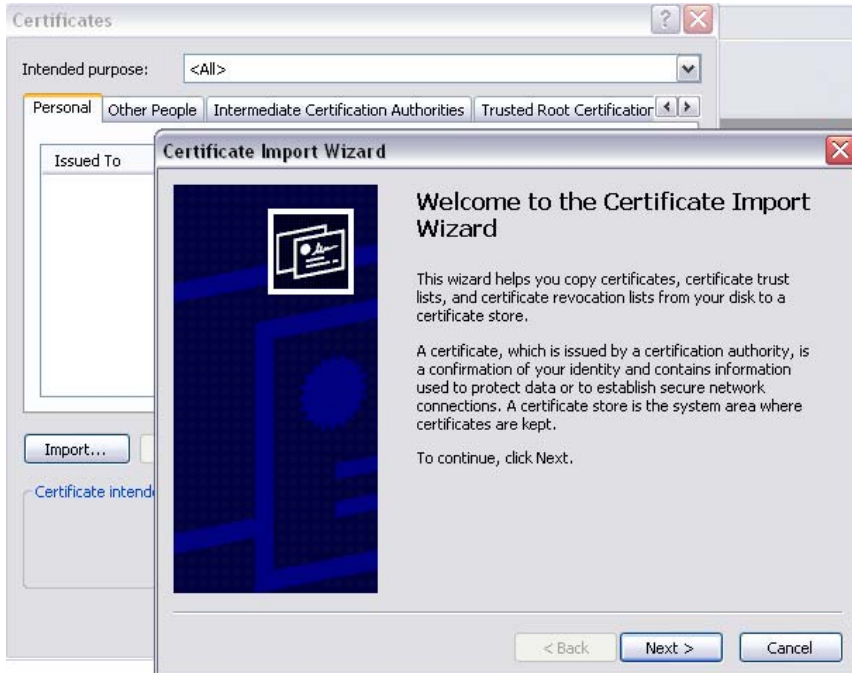
1. Open the Outlook Express and go to “Tools” & Then “Options”



2. Select “Security” Tab and Select “Digital IDs”



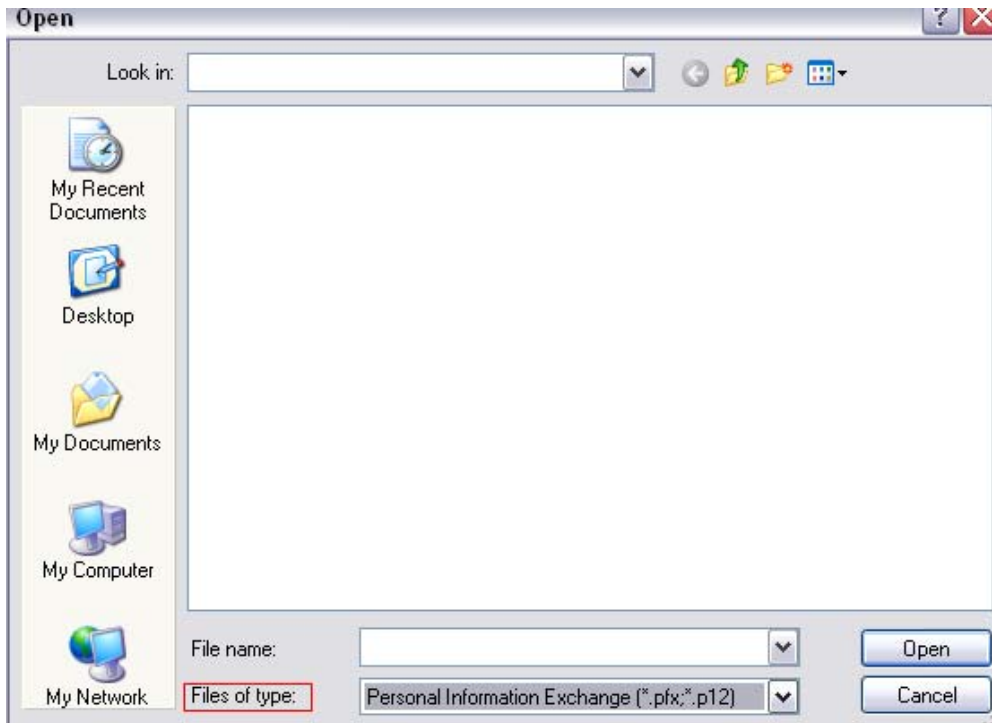
3. Select personal Tab and Select “Import” & Then Select “Next”



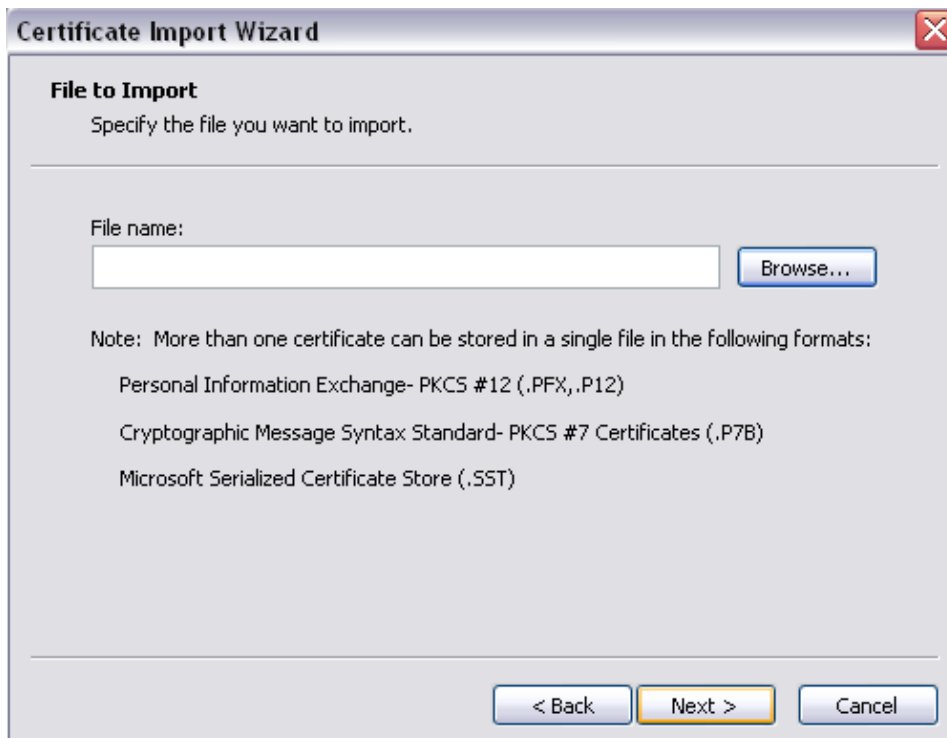
4. Select Browse and show the location where the “PFX” file is being stored



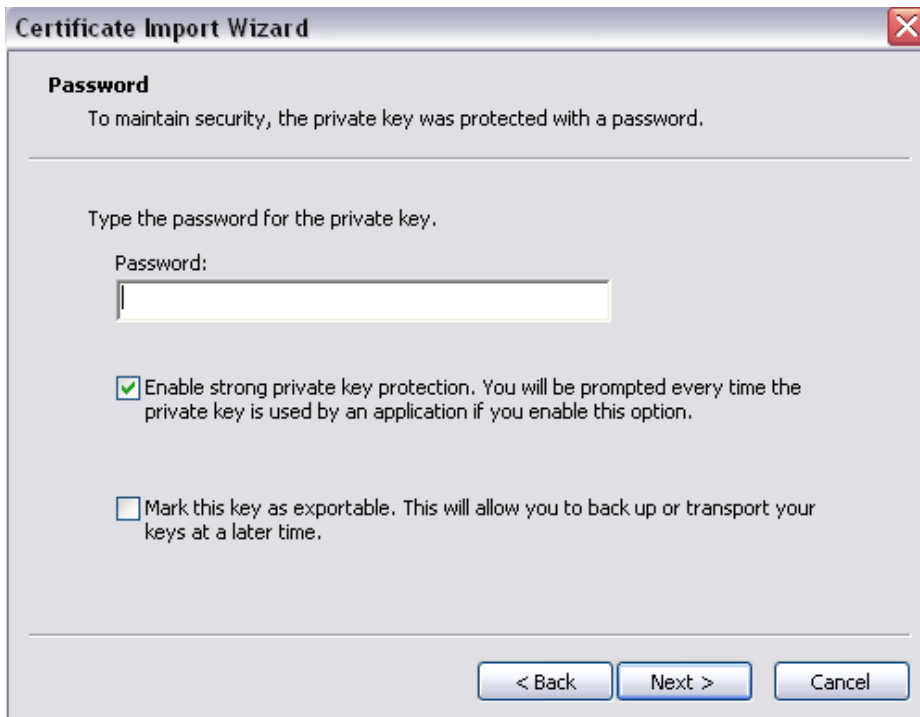
5. Select the File Type as Personal Information Exchange (PFX) & then show the place where the PFX is being stored. Then Select Open



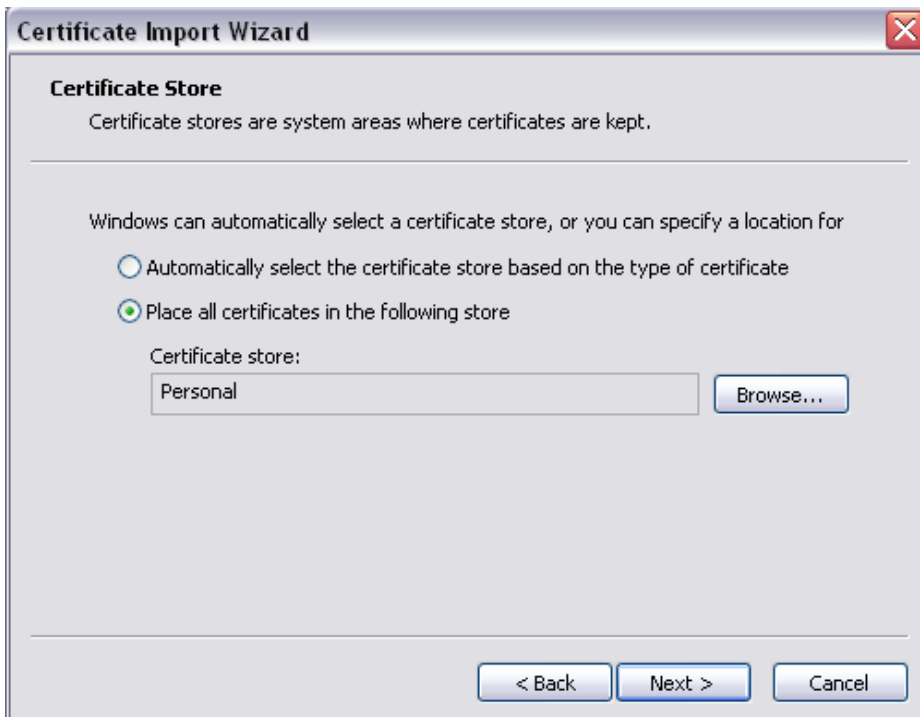
6. Select Next



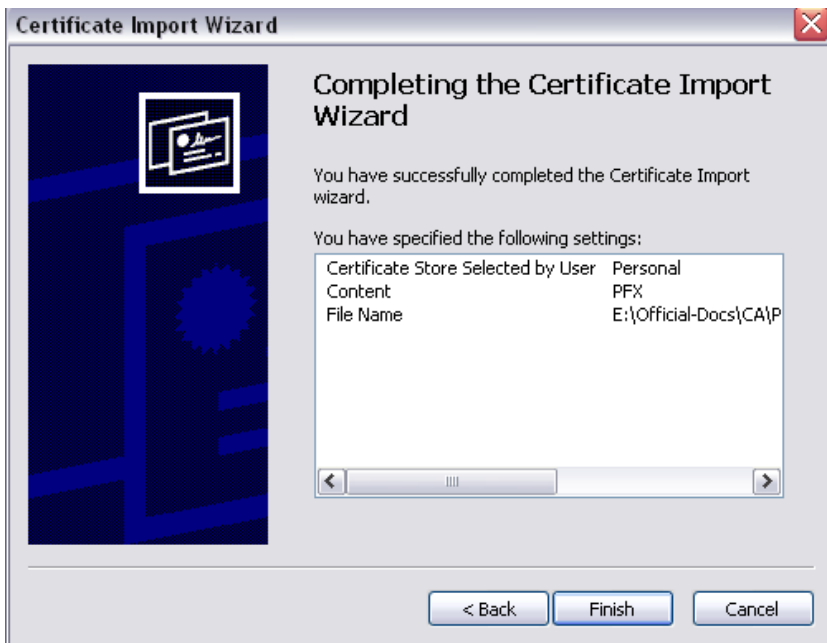
7. Enter the Password Provided along with the Certificate and then Tick the Check Box which says “Enable Strong Private Key Protection”



8. Select Next



9. Select Finish



10. Then Select "Set Security Level" on the next window



11. Select High & Then Select Next



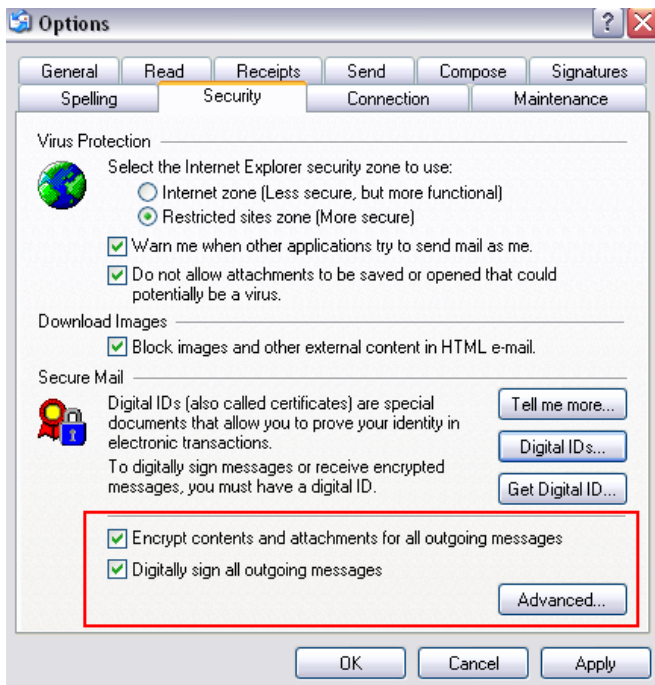
12. Enter the Password and Confirm the Password then Select Finish



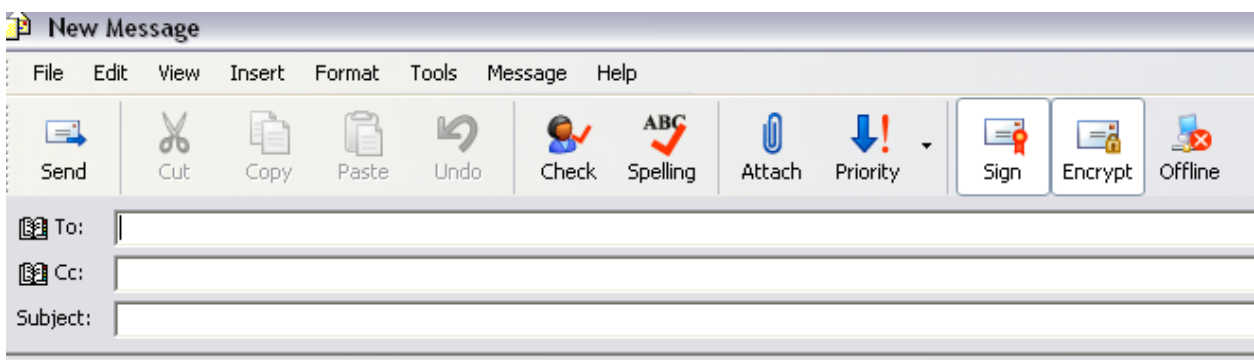
13. Select "OK"



14. Select the Two Check boxes as shown below in Red Rectangle Area



15. If the Digital Cert has been successfully imported, the two buttons for signing and encryption should be selected when composing a new email.



If any further Queries please do write to below email IDs or Call below.

Duleep Liyanage : duleep@lankaclear.com / 0112356948

Dhammika Gurugu : dhammika@lankaclear.com / 0772981334